

■ Easy maintenance

The P-150 is durable and easy to keep in top scanning condition. A user-installable Separation Pad and Feed Roller (sold separately) are available for replacing when worn—no service technician is required.

■ Energy efficient

This device meets the ENERGY STAR Program guidelines for energy efficiency, meaning it requires less energy and costs less to run.

P-150 Specifications

Type	Desktop sheet-fed scanner	
Document feeding	Automatic sheet feeding	
Document size	Width: 50.8 - 216 mm (2.08 - 8.6 in.) Length: 70 - 356 mm (2.76 - 14 in.)	
Document thickness and weight	0.06 - 0.15 mm, 52 - 128 g/m ² (14 - 32 lb. bond)	
Feeding capacity	3 mm stack (including curls) or 20 sheets of 64 g/m ² (16 lb. bond)	
Scanning element	CMOS CIS	
Light source	LED (red, green, and blue)	
Scanning side	Simplex/Duplex	
Scanning modes	Black and White, Error Diffusion, Advanced Text Enhancement II, 256-level Grayscale, 24-bit Color, Auto Color Detection	
Scanning resolutions	100 x 100 dpi, 150 x 150 dpi, 200 x 200 dpi, 300 x 300 dpi, 400 x 400 dpi, 600 x 600 dpi	
Scanning speed* (A4/LTR)	Power supply: With 1 USB	B&W/ 200 dpi: 12 ppm (Simplex), 14 ipm (Duplex)
		Grayscale 300 dpi: 12 ppm (Simplex), 14 ipm (Duplex)
		Color 200 dpi: 10 ppm (Simplex), 10 ipm (Duplex) 300 dpi: 6 ppm (Simplex), 6 ipm (Duplex)
	With 2 USB or AC Adapter	B&W/ 200 dpi: 15 ppm (Simplex), 30 ipm (Duplex)
		Grayscale 300 dpi: 15 ppm (Simplex), 30 ipm (Duplex)
		Color 200 dpi: 10 ppm (Simplex), 20 ipm (Duplex) 300 dpi: 6 ppm (Simplex), 12 ipm (Duplex)
Interface	Hi-Speed USB 2.0	
Scanner driver	ISIS/TWAIN	
Software	ISIS/TWAIN Driver, CaptureOnTouch, CaptureOnTouch Lite (Built-in), PaperPort, BizCard Reader	
Useful functions	Job Function, Double Feed Detection, Prevent Bleed Through / Remove Background, Moire Reduction, Skip Blank Page, Auto Page Size Detection, Deskew, Color Dropout (R/B/G), Color Enhancement (R), Text Orientation Recognition, Continuous Scanning, Edge Enhancement, Preset Gamma Curve, Prescan, Scan Area Setting, Separate Front & Back Settings	
Power requirements	With USB port connection: USB bus power, 0.5A (1 USB) / 1.0A (2 USB) With optional AC Adapter: DC6V, 0.8A	
Power consumption	2 USB: 5W, 1 USB: 2.5W, Sleep mode: 1W, Power OFF: 0.1W	
Operating environment	10 - 32.5°C (50 - 90.5°F), Humidity: 20 - 80% RH	
Dimensions (W x D x H)	Feed tray closed: 280 x 95 x 40 mm (11 x 3.7 x 1.6 in.) Feed tray open: 280 x 222.7 x 202.2 mm (11 x 8.8 x 7.9 in.)	
Weight	Approx. 1.0 kg (2.2 lbs.)	
Options/Consumables	AC Adapter, Carrying Case, Separation Pad, Feed Roller	

*Scanning speed may vary depending on PC environment, scanner settings, and other factors. Specifications are subject to change without notice.



ENERGY STAR and the ENERGY STAR mark are registered U.S. trademarks.

Other company names and product names appearing in this brochure are the registered trademarks and/or trademarks of their respective owners.



CANON ELECTRONICS INC.

1248, Shimokagemori, Chichibu-shi, Saitama 369-1892, Japan
www.canon-elec.co.jp

CANON U.S.A. INC.
New York Office/Headquarters: One Canon Plaza, Lake Success, NY 11042, U.S.A. Tel: (516) 328-5000
CANON CANADA, INC.
Toronto Office/Headquarters: 6390 Dixie Road, Mississauga, Ontario L5T 1P7, Canada Tel: (905) 795-1111
CANON EUROPA N.V.
Bovenkerkerweg 59-61 1185 XB Amstelveen The Netherlands Tel: (020) 545-8545
CANON LATIN AMERICA, INC.
703 Waterford Way, Suite 400, Miami, Florida 33126, U.S.A. Tel: (305) 260-7400
CANON AUSTRALIA PTY. LTD.
1 Thomas Holt Drive, North Ryde, Sydney, NSW 2113, Australia Tel: (02) 9805-2000
CANON SINGAPORE PTE. LTD.
1 Harbour Front Avenue, #04-01 Keppel Bay Tower, Singapore 098632 Tel: (65) 6799-8888
CANON HONGKONG COMPANY LTD.
19th Floor, The Metropolis Tower, 10 Metropolis Drive, Hung Hom, Kowloon, Hong Kong Tel: (852) 3191-2388
CANON KOREA BUSINESS SOLUTIONS INC.
168-12 Samseong-Dong, Gangnam-gu, Seoul, Korea Tel: (02) 3450-0700
CANON (CHINA) CO. LTD.
15F Jinbao Building No.89 Jinbao Street Dongcheng District, Beijing 100005, China Tel: (10) 8513-9999



imageFORMULA
P-150



An Ultra Compact, Convenient Document Scanner

Portability Like No Other

The stylish and portable P-150, with USB powering and plug-and-scan capabilities of CaptureOnTouch Lite, can quickly perform one-pass duplex scans wherever and whenever you need it to.

THE PERSONAL SCANNER THAT FITS IN THE PALM OF YOUR HAND



A remarkable document scanner – innovating industry standards for Personal category devices – the P-150 provides the scanning capabilities of sizeable scanners in a portable, compact machine with a sleek and stylish design. Plug-and-scan capabilities of the onboard CaptureOnTouch Lite software via USB connection allow mobility and accessibility for high-speed scanning jobs where and when you need them.

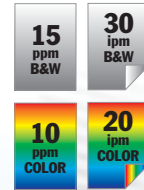
P-150



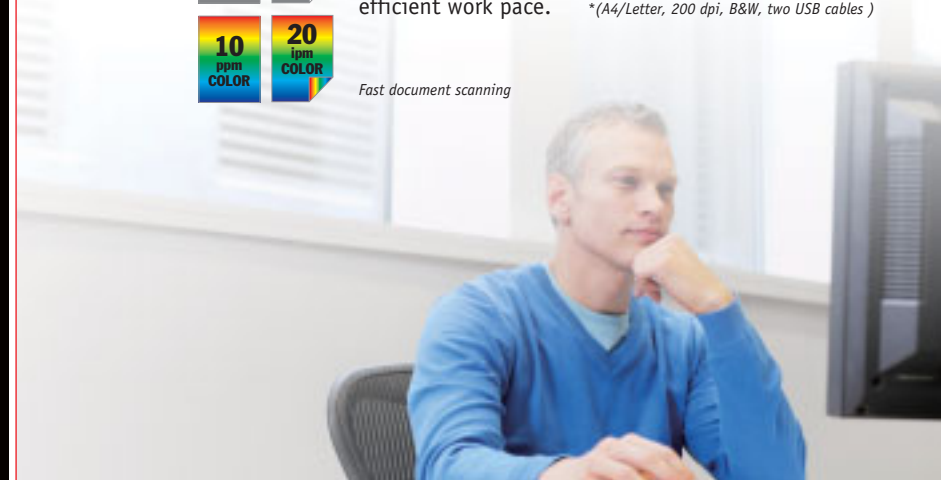
TECH INNOVATIONS

High-speed one-pass scanning

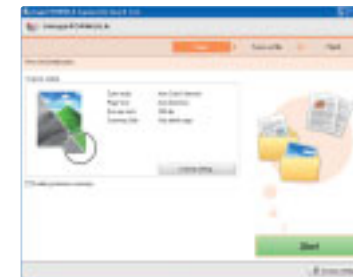
The P-150 can process up to 15 pages per minute using its impeccable one-pass duplex scanning feature and continuous scanning option.* By simultaneously scanning the front and back of a document, even those in full color, quickly distribute and manage files for an efficient work pace. *(A4/Letter, 200 dpi, B&W, two USB cables.)



Fast document scanning



Plug-and-scan with CaptureOnTouch Lite



Software installation is not required; instead, the P-150's scan drive software comes embedded to achieve plug-and-scan capabilities. With the Auto Start switch on the back of the P-150 set to "On," simply connect the scanner to a PC at a USB port. The CaptureOnTouch Lite onscreen instructions will automatically appear upon connection to guide you through the necessary steps to quickly go from hardcopy documents to electronic files. Before delivery of document information to the PC, utilize image processing functions of the software for optimal scan capture.



USB powering

With a USB cable, connect the P-150 to a PC via its USB outlets to provide power to the scanner. Connection with one USB cable can transmit full-color scanned information to the PC at a rate of 10 ppm/10 ipm, but when connected by two USB cables full power is achieved for faster scanning speeds of 10 ppm/20 ipm. If two USB ports are not available, an AC Adapter can provide energy for advanced scanner operability.

IMPRESSIVE FEATURES

Compact and portable

The impressively small design of the P-150 is incomparable. Measuring a mere 2 x 2.75 inches (50.8 x 70 mm) in size when closed, this document scanner is compact enough to carry in one hand. When in use, however, it is sizeable enough to effortlessly and smoothly handle A4- or Letter-size paper stacks.



Sleek and stylish design

Sporting an all-black finish and practical-yet-stylish structural details, the P-150 achieves a sleek and chic look without sacrificing functionality. The smart body conveniently condenses to a manageable size for transport, but when operation is required flips open to efficiently process document scans.

CaptureOnTouch

Installing CaptureOnTouch to a PC adds an expansive array of scanning options not available with CaptureOnTouch Lite, better equipping the P-150 for users requiring heavy everyday use. Precise image processing functions provide scanning accuracy and clarity. Custom job registration simplifies specific jobs by saving their necessary functions and settings collectively, ensuring faster utilization and job completion. Choose from two scan modes – "Scan First" and "Select Scan Job" – to run and manage scan jobs at-a-glance from the PC with easy user interface.

Scanning features of the P-150:

- Des skew • Auto Page Size Detection • Auto Color Detection
 - Double-Feed Detection (by length) • Skip Black Page • Text Orientation Recognition
 - Color Dropout (R/G/B)* • Color Enhancement (R)* • Advanced Text Enhancement II
 - Moire Reduction* • Edge Enhancement* • Preset Gamma Curve* • Prescan
 - Scan Area Setting • Prevent Bleed Through / Remove Background*
 - Separate Front & Back settings (Gamma/Brightness/Contrast correction)*
 - Continuous Scanning
- * Not available with CaptureOnTouch Lite

High-quality imaging

Canon has become a name synonymous with superior quality imaging, and scan jobs performed by the P-150 provide images that are no exception to that standard. B&W, grayscale, and full-color scans at up to 600 dpi through either one or two USB cable connections are high resolution.

